
S2711

Factsheet

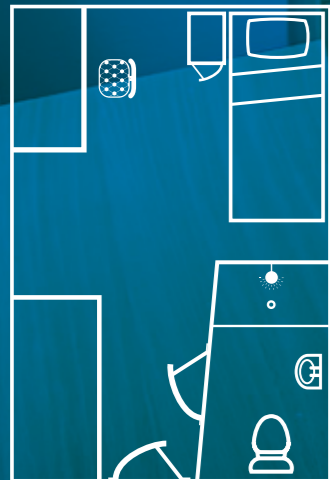
Contact: **QPS Marine Ships**
Email: ken.caine@qpsships.com
Mobile/WhatsApp: +1-516-647-5129
Website: www.qpsships.com



S2711 can accommodate upto 337 guests in modern en suite bedrooms, and offers a range of high quality facilities over four decks.

With air conditioning and wi-fi throughout, S2711 has accommodated thousands of workers at all levels with excellent feedback.

A Typical Bedroom Layout



- Spacious furnished bedroom
- Private en suite shower room
- Wardrobe, desk and further storage
- Flatscreen TV
- Wi-fi connection
- Windows in all bedrooms

S2711 offers a great solution for our project's needs, and provides our workers with a comfortable home in a remote location.

BP



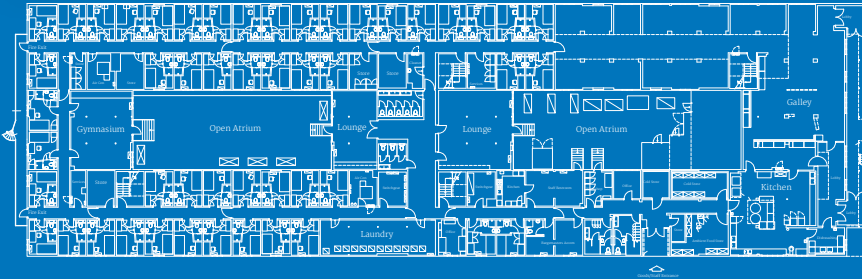
Facilities onboard include:

- 337 single en suite bedrooms
- Large restaurant and kitchen
- Bar and lounge
- Gymnasium
- Multi-purpose spaces for TV/Games/relaxation
- Wi-fi connection throughout

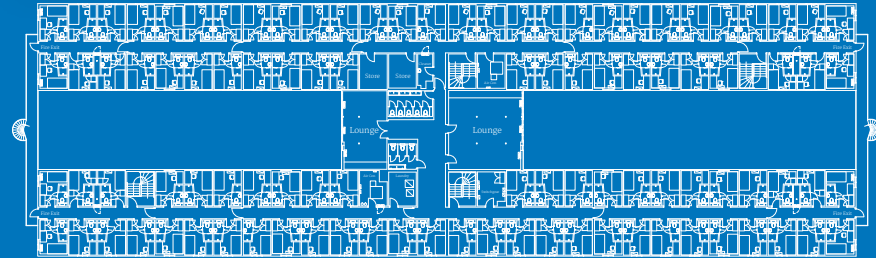
“We have worked really hard to create a comfortable space for workers living onboard, and tailor our vessels for each customer to create a bespoke facility to meet their needs.”



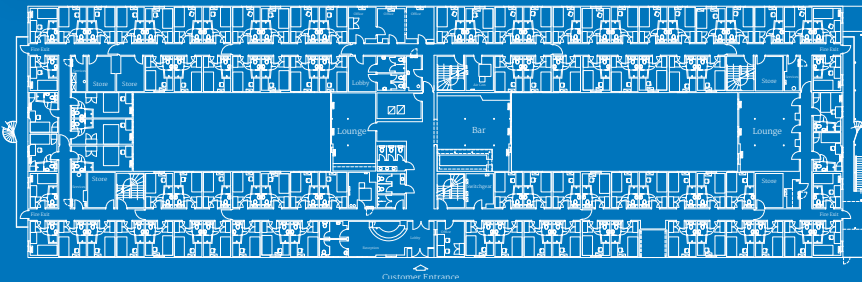
Ground Floor Layout



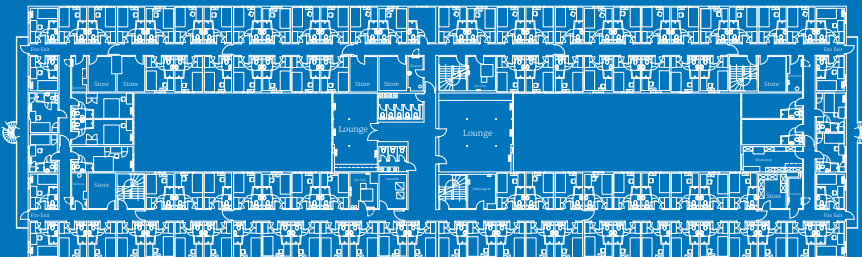
Third Floor Layout



First Floor Layout



Second Floor Layout



Technical Details

Vital Statistics

Length Overall:	91.60m
Width:	27.43m
Depth:	6.10m
Bottom of keel to highest point:	23.70m
Working Draft:	3m
Gross Tonnage:	11897 tons
Net Tonnage:	4682 tons
IMO Number:	7607510

Classification, Rules and Regulations

The unit is classed by Lloyds Register:
+100A1 Pontoon
Building Code: Swedish Building Code

Fire Detection, Fire Protection and Alarm

All accommodation spaces are covered with smoke and heat detectors. Manual fire alarm push buttons are located in the stairwells and adjacent to all external doors. Alarm buzzers are located in all public spaces and corridors, with a PA system serving all areas.

Power Supply

There are 4 x 240kW generators, 380 V, 50 cycles, 3 phase.

Water and Sewage System

The revolutionary 'SludeHammer™' sewage treatment system is installed, so overboard discharge is safe and environmentally friendly, and waste tanks are cleared in a matter of days.