



M / Y CHAKRA
FULL SPECIFICATIONS

PRINCIPAL CHARACTERISTICS



BUILDER
Devonport Yachts, UK

LENGTH
86.00m / 282.0ft

ENGINE HP
2 X 2940 kW

WATER CAPACITY
228,700 l

YEAR REBUILT
1998

BEAM
12.5m / 41.00ft

CRUISING SPEED
12.8 knots

GUESTS
12 (for charter) / 42 (if private)

YEAR OF MAJOR REFIT
2016

DRAFT
4.85m / 15.90ft

MAXIMUM SPEED
14.0 knots

CABINS
21

YEAR REFIT
2017

TONNAGE
2083grt, Net 524t

RANGE
2,141 nm at 14 knots
3,884 nm at 12 knots
5,116 nm at 10 knots

CABIN CONFIGURATION
1 Master Suite, 1 Presidential Suite,
7 VIP Suites, 6 Double Suites,
4 Twin Cabins, 2 Single Cabins

CONSTRUCTION
Steel Hull, Aluminum Superstructure

DISPLACEMENT
2387.34t

FUEL CONSUMPTION
800 l per hour

CREW
30

EXTERIOR DESIGN
Van der Werf

CLASSIFICATION
I + Hull + MACH, Unrestricted Navigation

FUEL CAPACITY
136,100 l

INTERIOR DESIGN
Van der Werf

MAIN ENGINES
MAN B&W ALPHA 12V28/32A

MACHINERY

GEARBOXES

Alpha Red.gear Amg28 24V030

STEERING

Krimpen Aan Den Ijssel

PROPULSION

Solid Screw Propeller Lb10, 280 Rpm
Variable Pitch

BOW THRUSTER

Kt300-60 Bakker Lidrech

STABILIZERS

2 x Koop Nautic “Sea Roq”

FUEL PURIFIER

Alfa Laval

OIL-WATER SEPARATOR

Facet-Cps-3,2 +Ebm 14X1

SEWAGE TREATMENT

Evac 90/90B

WATER MAKER

1 x H.e.m. 10 tonnes/day
1 x Tecnicomar Sailor 14 tonnes/day

GENERATORS

1 x Cummins Kta-19-64 400 kW
1 x Cummins Nt 855-6 160 kW

EMERGENCY GENERATOR

Kromhout/Heemaf 75kva

ELECTRICITY

380V-3-Phase Victor

BATTERY CHARGERS

Sae Converter 150 kW

SHORE POWER

50-60 Hz

AIR-CONDITIONING

Carrier 39FX

CATH. PROTECTION

Cathelco Icaf, Iccp

WATER MIST SYSTEM

Novenco X-Flow

COMMUNICATIONS EQUIPMENT

2 x VHF fixed-156-163 Mhz Furuno FM 8500

2 x VHF R/T with DSC-156-163 Furuno FM 8500

3 x VHF portable -156-163 ICOM ICGM

1500 C, 3 x Standard

MF radiotelephony-1605-40000 Mhz Furuno NBDD6

MF radiotelephony-4000-27500 Mhz Furuno NBDD6

EPIRB 121.5/406 MHZ Jotron 30 5 MK II

S/N :71F 17183

4 x UHF portable ICOM F20

Satellite EARTH station-standard B NERA B

Manluc

Satellite EARTH station-standard C Furuno

Felcom II

DFAX-207 Furuno

Naftex NX-700 Furuno

NAVIGATION EQUIPMENT

Satellite EARTH station-standard M NERA M

Marine 6A Furuno AA50

Search and rescue transponder

JOTRON TRON SART X 2

Radar Furuno 1510 MK II

Furuno 2110

Automatic identification system(AIS) Furuno FS

1562

Furuno DP6

Transas 4000 Charts

Robertson RGC11 gyrocompass

Anemometer IS-20 (not operational since
january)

John Lilley&Gillie LTD magnetic compass

Walker 4020 log

ENTERTAINMENT EQUIPMENT

30 x Samsung flat screens TV throughout

Karaoke touch screen system

Kaleidescape Video / Music on demand using

AMX operating system

SEA TEL 5004 Satellite TV

ACCOMMODATION

(All decks accessible by elevator)

GUESTS

1 Master Cabin super king size double –
office – full beam ensuite bathroom

1 Presidential Cabin super king size double –
ensuite bathroom

7 VIP Double Cabins – ensuite bathroom

6 King Size Double Cabins – ensuite bathroom

4 Twin Berth Cabins – ensuite bathroom

2 Single Berth Cabin – ensuite bathroom

GALLEY & LAUNDRY

1 x Robot coupe – R 502

1 x Lainox – steam oven

2 x Mareno – oven

2 x Kappa Metal – dairy fridge

1 x Alouminox – fridge

1 x Alouminox freezer

3 x Technofreezer fridge

1 x Professional dough mixer – Fimar

1 x Dishwashing machine - DIHR

3 x Hoover – Miele

1 x Hoover Singer

1 x Steam machine

1 x Carpet machine

4 x Washing machine – Electrolux – W555H

4 x Dryer – Electrolux – T5130C

1 x Magler - Nyborg - 2310S2

1 x Dryer - Nyborg - 30 T SL

1 x Termozeta - Stiro Express

1 x Professional iron machine with steam -
Electrolux – Orton

1 x HAND IRON MACHINE – Philips

1 x hand iron machine - Bosch

DECK & SAFETY

DECK EQUIPMENT

Jacuzzi KOS mini pool

Stainless steel stern gangway

(8X)RFD SURVIVAMK4 25 person

SAFETY & SECURITY EQUIPMENT

CCTV with PTZ And fixed cameras

HIK-vision cameras

Movement sensors

TENDER & WATERSPORTS

TENDERS

Scanner Envy, Aidan, Limo tender

CRANES

Davit for SOLAS Boat

WATER SPORTS

1x Yamaha VXS Wave Runner

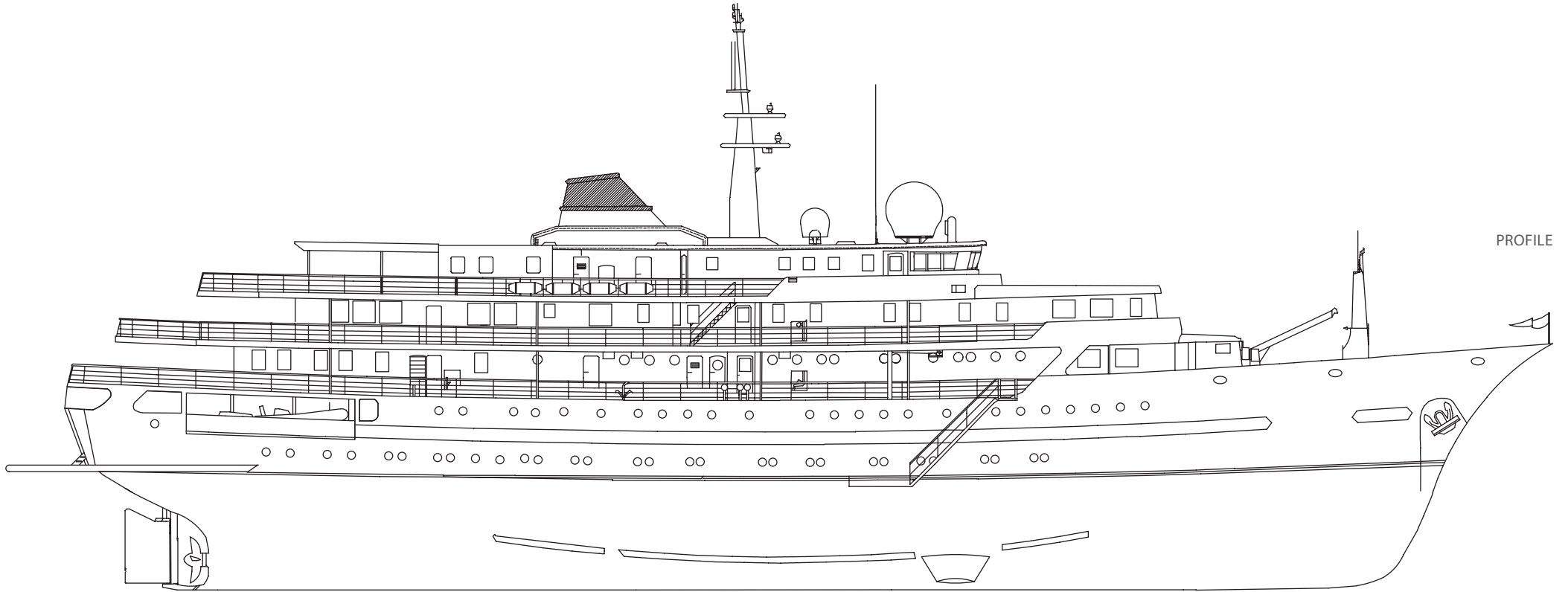
2 x Jet Sea Doo GTX 260 Limited, 4-stroke

Flyboard Spark

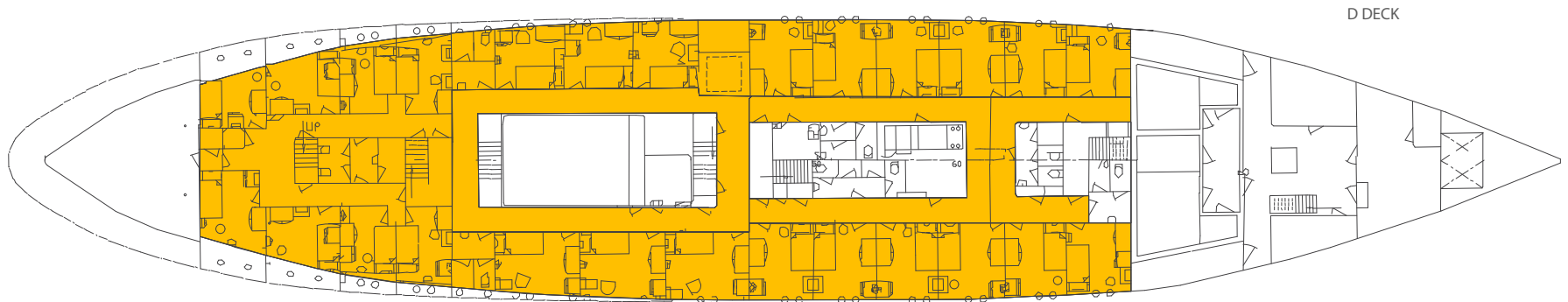
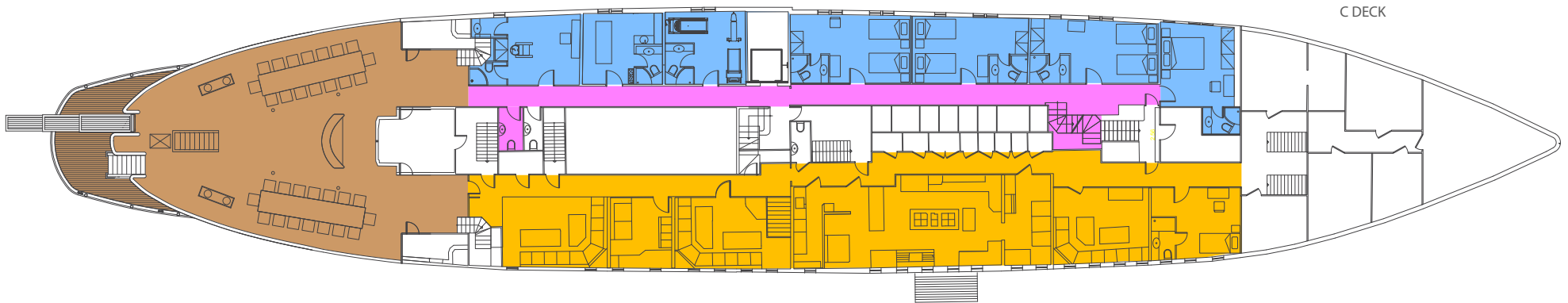
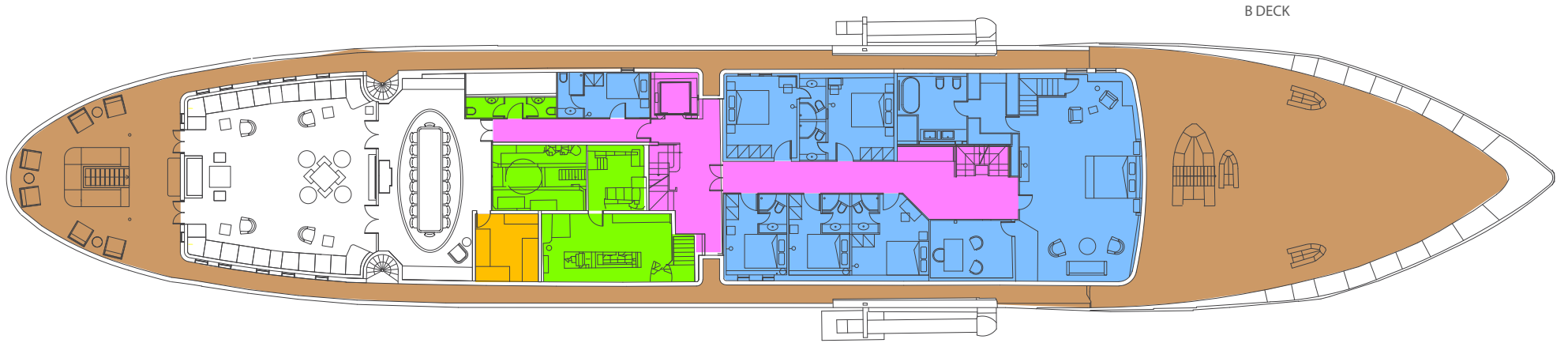
Skis, wakeboards, wakesurfs

Scuba diving & snorkeling

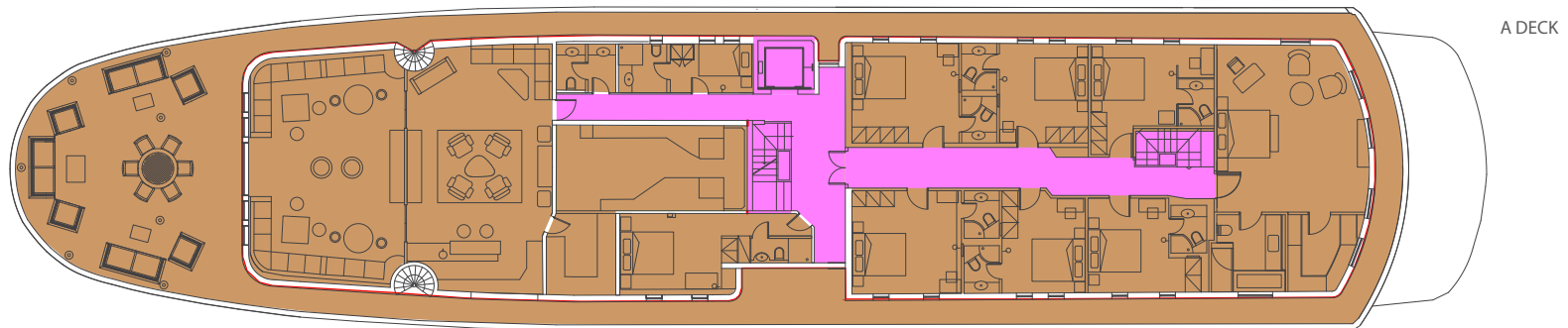
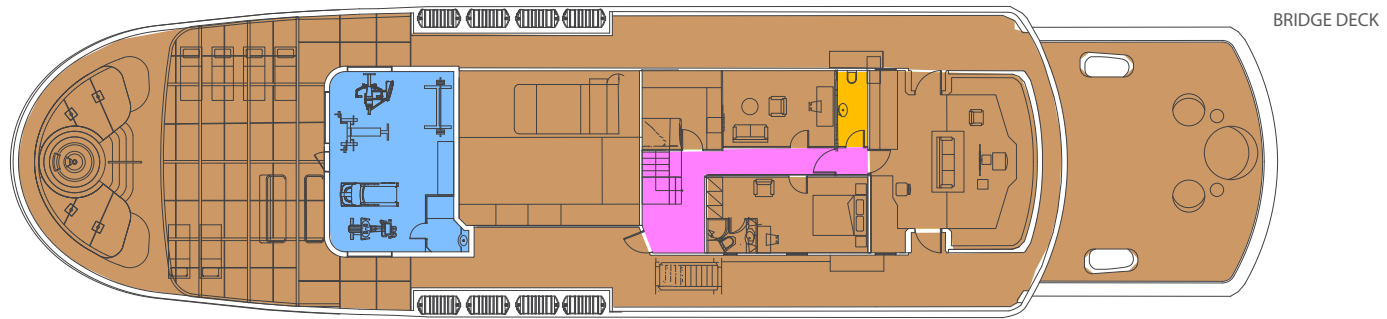
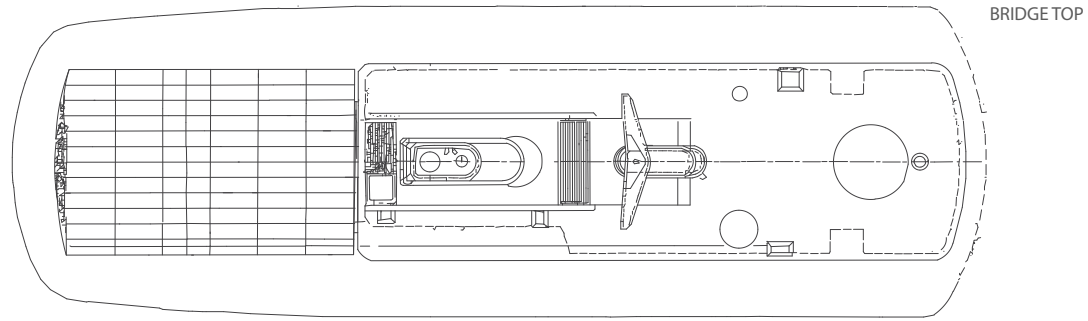
DECK LAYOUTS



DECK LAYOUTS



DECK LAYOUTS



"This document is not contractual. All specifications are given in good faith and offered for informational purposes only. The publisher and company do not warrant or assume any legal liability or responsibility for the accuracy, completeness, or usefulness of any information and/or images displayed. Yacht inventory, specifications and charter prices are subject to change without prior notice. None of the text and/or images used in this brochure may be reproduced without written consent from the publisher."